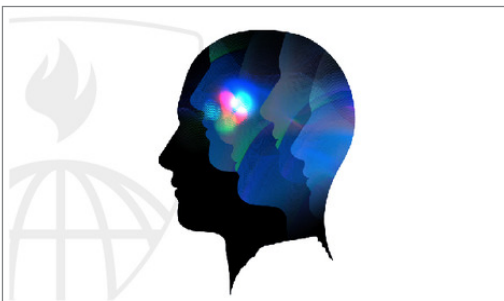


JANUARY 07, 2014

# Statement of Accomplishment

## JOAN SWART

HAS SUCCESSFULLY COMPLETED THE JOHNS HOPKINS UNIVERSITY'S OFFERING OF



### Major Depression in the Population: A Public Health Approach

This course illustrates the principles of public health applied to depressive disorder, including principles of epidemiology, transcultural psychiatry, health services research, and prevention.

WILLIAM EATON, PHD  
BLOOMBERG SCHOOL OF PUBLIC HEALTH, JOHNS  
HOPKINS UNIVERSITY

RAMIN MOJTABAI, MD  
BLOOMBERG SCHOOL OF PUBLIC HEALTH, JOHNS  
HOPKINS UNIVERSITY

WIETSE TOL, PHD, MSC  
BLOOMBERG SCHOOL OF PUBLIC HEALTH, JOHNS  
HOPKINS UNIVERSITY